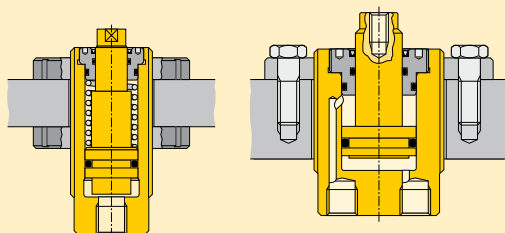


# Threaded cylinders *Application & selection*




Shown: CST-10382, CST-572, CST18252, CDT-18132, CDT-40252



**Threaded cylinders are designed for workpiece positioning, holding and ejecting applications where space is at a premium. Double-acting models are also suited to manufacturing applications, such as production punching.**



## Accessory chart

Body thread D	Mounting flange Sold Separately  87 ▶	Flange nut Sold Separately  86 ▶	Plunger thread K	Contact bolt Sold Separately  86 ▶
M12 x 1,5	MF-122	FN-122	M4 x 0,7	BS-42
M20 x 1,5	MF-202	FN-202	M6 x 1	BS-62
M28 x 1,5	MF-282	FN-282	M8 x 1,25	BS-82
M30 x 1,5	-	FN-302	M10 x 1,5	BS-102
M35 x 1,5	MF-352	FN-352	M16 x 2	BS-162
M42 x 1,5	MF-422	FN-422	M20 x 2,5	BS-202
M48 x 1,5	MF-482	FN-482		
M55 x 1,5	MF-552	FN-552		
M65 x 1,5	MF-652	FN-652		
M80 x 2	MF-802	FN-802		

**Threaded cylinder, mounted with horizontal bracket to position the workpiece against the stops. Enerpac swing cylinders are then activated to clamp the work piece before machining operations begin.**



## High clamping forces in a compact body

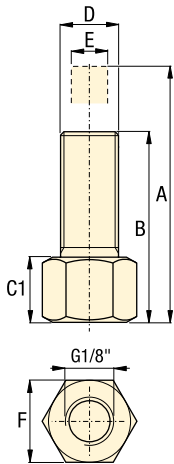
- Minimum cylinder diameter combined with maximized clamping forces
- Threaded body allows fine positioning and easy installation
- Internal plunger wipers allow maintenance-free, high-cycle performance
- Center-tapped plungers will hold workpiece contact buttons
- Single-acting models with spring return simplify hydraulic tubing requirements
- Double-acting models are recommended for high-cycle applications.

## Product selection

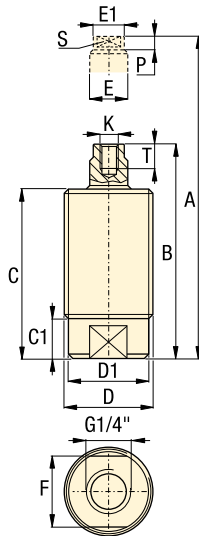
Cylinder capacity at 350 bar kN	Stroke mm	Model number	Effective area cm <sup>2</sup>		Oil capacity cm <sup>3</sup>		
			push	pull	push	pull	
<b>▼ Single acting</b>							
1,7	-	7,3	<b>CST-272</b>	0,52	-	0,36	-
1,7	-	10,3	<b>CST-2102</b>	0,52	-	0,52	-
1,7	-	12,0	<b>CST-2132</b>	0,52	-	0,67	-
4,4	-	7,0	<b>CST-572</b>	1,29	-	0,82	-
4,4	-	13,0	<b>CST-5132</b>	1,29	-	1,64	-
4,4	-	18,8	<b>CST-5192</b>	1,29	-	2,46	-
4,4	-	25,0	<b>CST-5252</b>	1,29	-	3,11	-
4,4	-	37,4	<b>CST-5382</b>	1,29	-	4,75	-
11,3	-	8,6	<b>CST-1072</b>	3,32	-	2,32	-
11,3	-	13,0	<b>CST-10132</b>	3,32	-	4,31	-
11,3	-	19,0	<b>CST-10192</b>	3,32	-	6,30	-
11,3	-	26,8	<b>CST-10252</b>	3,32	-	8,29	-
11,3	-	38,0	<b>CST-10382</b>	3,32	-	12,60	-
17,2	-	13,0	<b>CST-18132</b>	5,10	-	6,63	-
17,2	-	25,0	<b>CST-18252</b>	5,10	-	12,74	-
17,2	-	38,0	<b>CST-18382</b>	5,10	-	19,37	-
17,2	-	50,0	<b>CST-18502</b>	5,10	-	25,48	-
26,9	-	15,0	<b>CST-27152</b>	7,88	-	11,82	-
26,9	-	25,0	<b>CST-27252</b>	7,88	-	19,70	-
26,9	-	50,0	<b>CST-27502</b>	7,88	-	39,40	-
39,2	-	14,6	<b>CST-40132</b>	11,36	-	14,76	-
39,2	-	26,6	<b>CST-40252</b>	11,36	-	28,39	-
39,2	-	39,6	<b>CST-40382</b>	11,36	-	43,15	-
39,2	-	51,6	<b>CST-40502</b>	11,36	-	56,78	-
<b>▼ Double acting</b>							
17,2	10,4	13,0	<b>CDT-18132</b>	5,10	3,03	6,63	3,94
17,2	10,4	25,0	<b>CDT-18252</b>	5,10	3,03	12,74	7,58
17,2	10,4	38,0	<b>CDT-18382</b>	5,10	3,03	19,37	11,52
17,2	10,4	50,0	<b>CDT-18502</b>	5,10	3,03	38,61	23,11
26,9	18,2	14,7	<b>CDT-27152</b>	7,87	5,29	11,81	7,94
26,9	18,2	24,7	<b>CDT-27252</b>	7,87	5,29	19,68	13,23
26,9	18,2	49,7	<b>CDT-27502</b>	7,87	5,29	39,35	26,45
39,2	26,1	13,0	<b>CDT-40132</b>	11,35	7,55	14,76	9,81
39,2	26,1	25,0	<b>CDT-40252</b>	11,35	7,55	28,39	18,87
39,2	26,1	38,0	<b>CDT-40382</b>	11,35	7,55	43,15	28,68
39,2	26,1	50,0	<b>CDT-40502</b>	11,35	7,55	56,77	37,74

Note: - Seal material: Buna-N, Polyurethane.  
- Minimum operating pressure for single-acting models (to overcome return spring force) is 40 bar.

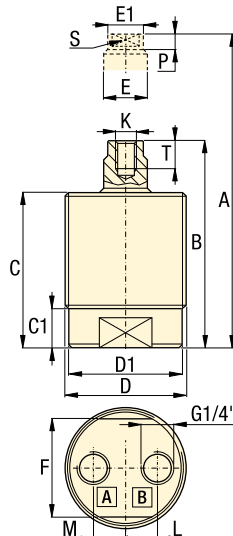
CST-272, -2102, 2132



Other CST models



CDT models

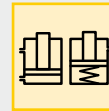


Force: 1,7 - 39,2 kN

Stroke: 7,3 - 51,6 mm

Pressure: 40 - 350 bar

- E** Cilindros roscados
- F** Vérins corps filetés
- D** Einschraubzylinder



**Options**

Accessories

86 ▶



**Product dimensions in mm [  $\pm$  ]**

Model number	A Ext. height	B Retr. height	C	C1	D	D1	E	E1	F	K	L	M	P	S	T	kg
<b>▼ Single acting</b>																
CST-272	49,3	42,0	42,0	13,5	M12 x 1,5	-	4,8	-	16,0	-	-	-	-	-	-	0,1
CST-2102	52,8	42,8	42,8	14,3	M12 x 1,5	-	4,8	-	16,0	-	-	-	-	-	-	0,1
CST-2132	63,2	51,2	50,2	14,2	M12 x 1,5	-	4,8	-	16,0	-	-	-	-	-	-	0,1
CST-572	58,1	51,1	47,0	7,5	M20 x 1,5	17,7	7,9	7,0	15,9	M4 x 0,7	-	-	4,0	5,9	7,0	0,1
CST-5132	72,6	59,6	55,5	7,5	M20 x 1,5	17,7	7,9	7,0	15,9	M4 x 0,7	-	-	4,0	5,9	7,0	0,1
CST-5192	83,1	64,3	60,0	7,5	M20 x 1,5	17,7	7,9	7,0	15,9	M4 x 0,7	-	-	4,0	5,9	7,0	0,2
CST-5252	98,3	73,3	70,2	7,5	M20 x 1,5	17,7	7,9	7,0	15,9	M4 x 0,7	-	-	4,0	5,9	7,0	0,3
CST-5382	131,1	93,7	89,0	7,5	M20 x 1,5	17,7	7,9	7,0	15,9	M4 x 0,7	-	-	4,0	5,9	7,0	0,4
CST-1072	67,0	58,4	52,0	10,5	M28 x 1,5	26,0	11,9	11,0	24,0	M6 x 1	-	-	5,5	9,0	8,0	0,2
CST-10132	64,4	64,4	58,0	10,5	M28 x 1,5	26,0	11,9	11,0	24,0	M6 x 1	-	-	5,5	9,0	8,0	0,3
CST-10192	98,9	79,9	73,5	10,5	M28 x 1,5	26,0	11,9	11,0	24,0	M6 x 1	-	-	5,5	9,0	8,0	0,3
CST-10252	115,8	89,0	84,3	10,5	M28 x 1,5	26,0	11,9	11,0	24,0	M6 x 1	-	-	5,5	9,0	8,0	0,4
CST-10382	142,9	104,9	98,5	10,5	M28 x 1,5	26,0	11,9	11,0	24,0	M6 x 1	-	-	5,5	9,0	8,0	0,4
CST-18132	82,9	69,9	63,5	12,5	M35 x 1,5	32,5	16,0	15,0	30,0	M8 x 1,25	-	-	6,5	12,0	12,0	0,5
CST-18252	114,9	89,9	83,5	12,5	M35 x 1,5	32,5	16,0	15,0	30,0	M8 x 1,25	-	-	6,5	12,0	12,0	0,5
CST-18382	146,4	108,4	102,0	12,5	M35 x 1,5	32,5	16,0	15,0	30,0	M8 x 1,25	-	-	6,5	12,0	12,0	0,6
CST-18502	174,4	124,4	118,0	12,5	M35 x 1,5	32,5	16,0	15,0	30,0	M8 x 1,25	-	-	6,5	12,0	12,0	0,7
CST-27152	87,9	72,9	66,5	13,5	M42 x 1,5	39,8	18,0	17,0	36,0	M8 x 1,25	-	-	6,5	15,0	12,0	0,6
CST-27252	118,4	93,4	87,0	13,5	M42 x 1,5	39,8	18,0	17,0	36,0	M8 x 1,25	-	-	6,5	15,0	12,0	0,9
CST-27502	195,9	145,9	139,5	13,5	M42 x 1,5	39,8	18,0	17,0	36,0	M8 x 1,25	-	-	6,5	15,0	12,0	1,3
CST-40132	89,4	74,8	68,5	11,0	M48 x 1,5	45,4	19,9	19,0	41,4	M10 x 1,5	-	-	8,0	16,9	12,0	1,0
CST-40252	120,9	94,3	88,0	11,0	M48 x 1,5	45,4	19,9	19,0	41,4	M10 x 1,5	-	-	8,0	16,9	12,0	1,1
CST-40382	164,9	125,3	119,0	11,0	M48 x 1,5	45,4	19,9	19,0	41,4	M10 x 1,5	-	-	8,0	16,9	12,0	1,5
CST-40502	188,6	137,0	130,7	11,0	M48 x 1,5	45,4	20,0	19,0	41,4	M10 x 1,5	-	-	8,0	16,9	12,0	1,7
<b>▼ Double acting</b>																
CDT-18132	81,0	68,0	61,5	16,0	M48 x 1,5	45,7	15,8	15,0	41,0	M8 x 1,25	12,8	12,8	6,5	12,7	12,0	1,0
CDT-18252	107,0	82,0	75,5	16,0	M48 x 1,5	45,7	15,8	15,0	41,0	M8 x 1,25	12,8	12,8	6,5	12,7	12,0	1,3
CDT-18382	131,5	93,5	87,0	16,0	M48 x 1,5	45,7	15,8	15,0	41,0	M8 x 1,25	12,8	12,8	6,5	12,7	12,0	1,5
CDT-18502	155,5	105,5	99,0	16,0	M48 x 1,5	45,7	15,8	15,0	41,0	M8 x 1,25	12,8	12,8	6,5	12,7	12,0	1,7
CDT-27152	85,7	71,0	64,5	17,0	M55 x 1,5	52,7	17,9	17,0	46,0	M8 x 1,25	16,0	10,0	6,5	15,8	12,0	1,1
CDT-27252	106,7	82,0	75,5	17,0	M55 x 1,5	52,7	17,9	17,0	46,0	M8 x 1,25	16,0	10,0	6,5	15,8	12,0	1,4
CDT-27502	156,7	107,0	100,5	17,0	M55 x 1,5	52,7	17,9	17,0	46,0	M8 x 1,25	16,0	10,0	6,5	15,8	12,0	1,8
CDT-40132	91,5	78,5	70,5	17,5	M65 X 1,5	60,5	21,9	21	54,9	M10 x 1,5	19,5	10,5	8,0	16,9	15,0	1,8
CDT-40252	115,5	90,5	82,5	17,5	M65 x 1,5	60,5	21,9	21,0	54,9	M10 x 1,5	19,5	10,5	8,0	16,9	15,0	2,0
CDT-40382	141,5	103,5	95,5	17,5	M65 x 1,5	60,5	21,9	21,0	54,9	M10 x 1,5	19,5	10,5	8,0	16,9	15,0	2,5
CDT-40502	175,0	125,0	117,0	17,5	M65 x 1,5	60,5	21,9	21,0	54,9	M10 x 1,5	19,5	10,5	8,0	16,9	15,0	3,0